

POSTLAND ROAD, CROWLAND



NOTES:

The details depicted on this drawing are the copyright of Seagate Homes and may not be reproduced without permission. This drawing must not be re-issued, loaned or copied without the consent. Errors omissions and discrepancies should be reported to the originator immediately.

All dimensions to be checked on site prior to construction or off-site fabrication by the Contractor, his Sub-contractor or Supplier.

Do not scale plans - use figure or grid dimensions where given. Any deviation from the drawing is to be reported to the originator immediately.

IF IN DOUBT ASK!

Key

Proposed External Materials

STONE
Garden walls to be built in facing brick to match main house (refer to standard detail for wall design)

CEDRAL BOARDING (C50 Black)

MARLEY EDGEMERE INTERLOCKING CONCRETE SLATE (Smooth Grey)

MARLEY EDGEMERE INTERLOCKING CONCRETE SLATE (Old English Dark Red)

Windows & rear/side doors - White UPVC
Some houses with cladding to have black - refer to spec sheet
Front Doors - Black Composite (with white frame) - refer to spec sheet

House with dummy chimney(s) - These locations take precedent over house type drawings.

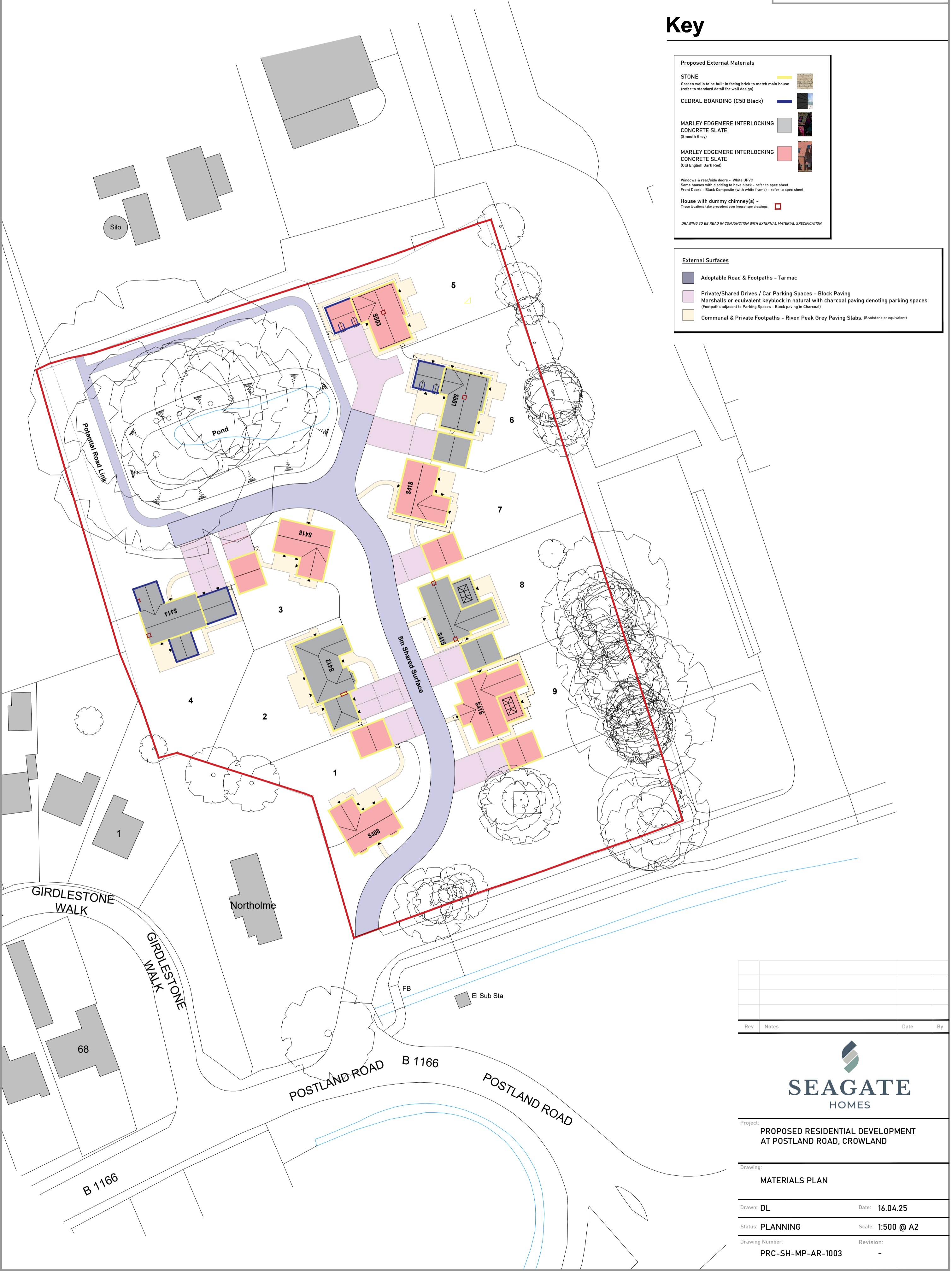
DRAWING TO BE READ IN CONJUNCTION WITH EXTERNAL MATERIAL SPECIFICATION

External Surfaces

Adoptable Road & Footpaths - Tarmac

Private/Shared Drives / Car Parking Spaces - Black Paving
Marshalls or equivalent keyblock in natural with charcoal paving denoting parking spaces.
(Footpaths adjacent to Parking Spaces - Black paving in Charcoal)

Communal & Private Footpaths - Riven Peak Grey Paving Slabs. (Bradstone or equivalent)



Rev	Notes	Date	By



Project:	PROPOSED RESIDENTIAL DEVELOPMENT AT POSTLAND ROAD, CROWLAND		
Drawing:	MATERIALS PLAN		
Drawn:	DL	Date:	16.04.25
Status:	PLANNING	Scale:	1:500 @ A2
Drawing Number:	PRC-SH-MP-AR-1003	Revision:	-