



HGV Routing Plan for Caudwell Solar Farm

1. Introduction

This HGV Routing Plan outlines the designated routes for Heavy Goods Vehicles (HGVs) accessing and exiting the Caudwell Solar Farm site. This plan supersedes the routing plan cited in the Construction Traffic Management Plan (CTMP) and the Environmental Impact Assessment (EIA), Volume 1, Chapter 4, in light of recent consultations and feedback from local residents and the Lincolnshire Council Highway and Lead Local Flood Authority.

2. Superseded Routing Plans

The initial routing plans for construction traffic were detailed in the following documents:

1. Construction Traffic Management Plan (CTMP) dated May 2023:
 - Reference: ADL/AM/5607/23A
 - Key details: Section 3.3 outlines the proposed construction vehicle route using Eastern Road and Marsh Road for access and egress.
2. Environmental Impact Assessment (EIA) Volume 1, Chapter 4 dated July 2023:
 - This updated plan addresses concerns and suggestions highlighted in the consultation response dated 29th November 2023 and comments from local residents (see consultation response).

3. Updated Access Routes

3.1 Inbound (Loaded Vehicles)

Starting Point: A17 at Holbeach

Route:

- Turn off the A17 at Holbeach.
- Follow Penny Hill Road.



- Continue onto Peartree House Road.
- Turn onto Eastern Road to reach the existing entrance to Caudwell Farms' Hartley Farm campus.

Rationale:

This route has been selected because the roads to the west of the Application Site are generally wider and of a better constructional standard. These roads are better suited to bear the loads and accommodate the maneuvering of heavier (loaded) vehicles.

3.2 Outbound (Empty Vehicles)

Starting Point: Caudwell Farms' Hartley Farm Solar Farm.

Route:

- Exit onto Eastern Road.
- Follow Sot's Hole Bank.
- Continue onto Dawsmere Road.
- Proceed onto Marsh Road.
- Follow Hall Gate through the eastern edge of Gedney Dyke village.
- Continue onto Kingsgate.
- Proceed onto Chapel Gate.
- Turn at the Gedney Roundabout to rejoin the A17.

Rationale:

Empty vehicles are lighter and can safely travel on the narrower roads with tighter bends and past the village of Gedney Dyke. The counterclockwise arrangement allows HGVs to rejoin the A17 at a roundabout where the traffic has slowed, reducing the need to wait for gaps in both streams of fast-moving traffic.

4. Traffic Management Measures

The traffic management measures outlined in this plan are in line with the original suggestions in the CTMP and EIA documents. The key measures include:



Signage

Clear signage will be installed along the routes to direct HGV drivers.

Signage will also indicate local speed limits, restrictions, and warning signs for narrow roads or tight bends.

Timing of Deliveries

Deliveries will be scheduled to avoid peak traffic times, minimizing congestion and disruption to local residents.

Preferred delivery times are between 09:00 - 16:00 on weekdays.

Monitoring and Compliance

A log of HGV movements will be maintained to ensure compliance with the designated routes and timing restrictions.

Spot checks and audits will be conducted to enforce adherence to the routing plan.

Community Communication

Regular updates will be provided to the local community regarding HGV movements.

A dedicated contact number will be established for residents to report any issues or concerns related to HGV traffic.

Environmental and Safety Considerations

The environmental and safety considerations in this plan also align with the original suggestions in the CTMP and EIA documents. The key considerations include:

Noise and Emissions

HGVs used for this project will comply with the latest emissions standards to minimize environmental impact.

Noise-reducing measures such as low-noise tires and restricted use of horns will be implemented.



Road Maintenance

Regular inspections of the designated routes will be conducted to identify and repair any road damage caused by HGV traffic.

Collaboration with local authorities to ensure the maintenance of high road standards.

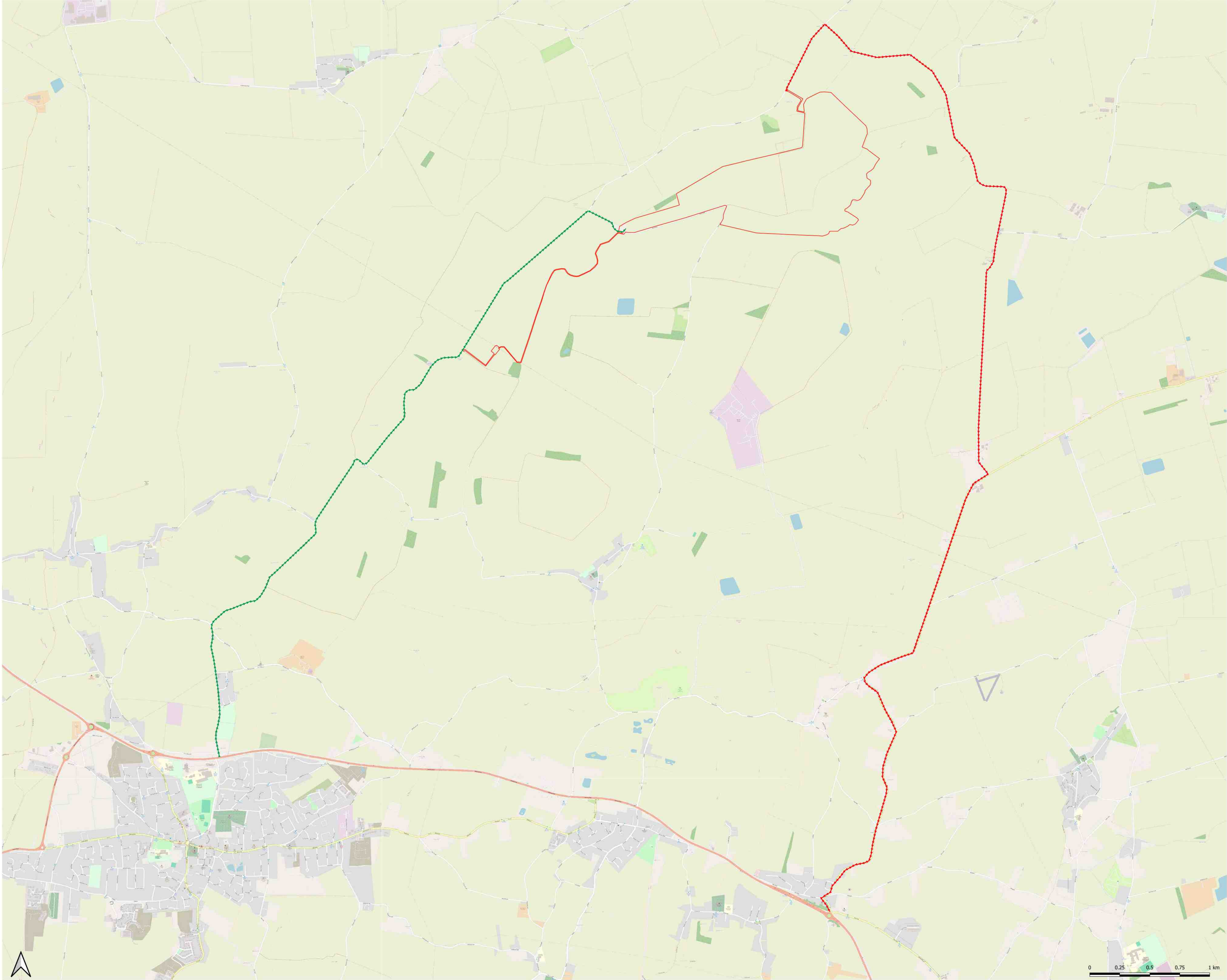
Safety Protocols

All drivers will receive training on safe driving practices specific to the routes and local conditions.

Emergency contact numbers and procedures will be distributed to all HGV drivers.

5. Conclusion

This HGV Routing Plan has been carefully developed to ensure the safe and efficient movement of heavy goods vehicles to and from the Caudwell Solar Farm site. By following the designated routes and implementing the outlined traffic management measures, we aim to minimise disruption to the local community and ensure compliance with regulatory requirements. This updated plan supersedes previous routing plans as detailed in the CTMP and EIA in light of recent consultations and community feedback.



- Exit Route
- Access Route
- Development Boundary

Title:
**Caudwell Solar Farm,
HGV Routing Plan**

Scale: 1:10,000@A0
Date 26/06/24
Drawn: MB
Checked: JL
Drawing Number GEI-2021-D3
Version: V1