

# LIGHTING



22 Shore View  
Hampton Hargate  
Peterborough  
PE78FS

T 07799 585277  
E. [info@seven22.co.uk](mailto:info@seven22.co.uk)  
W. [www.seven22.co.uk](http://www.seven22.co.uk)

Job No. 005a  
Client: Green Stick Company

Location: Land Off High Road, Moulton, Spalding, Lincolnshire  
Reference/Description: Planning approval H13-0683-20. Change of Use to fishing and wildlife holiday lodges, erection of 5 modular holiday lodges with associated landscaping, planting and parking.

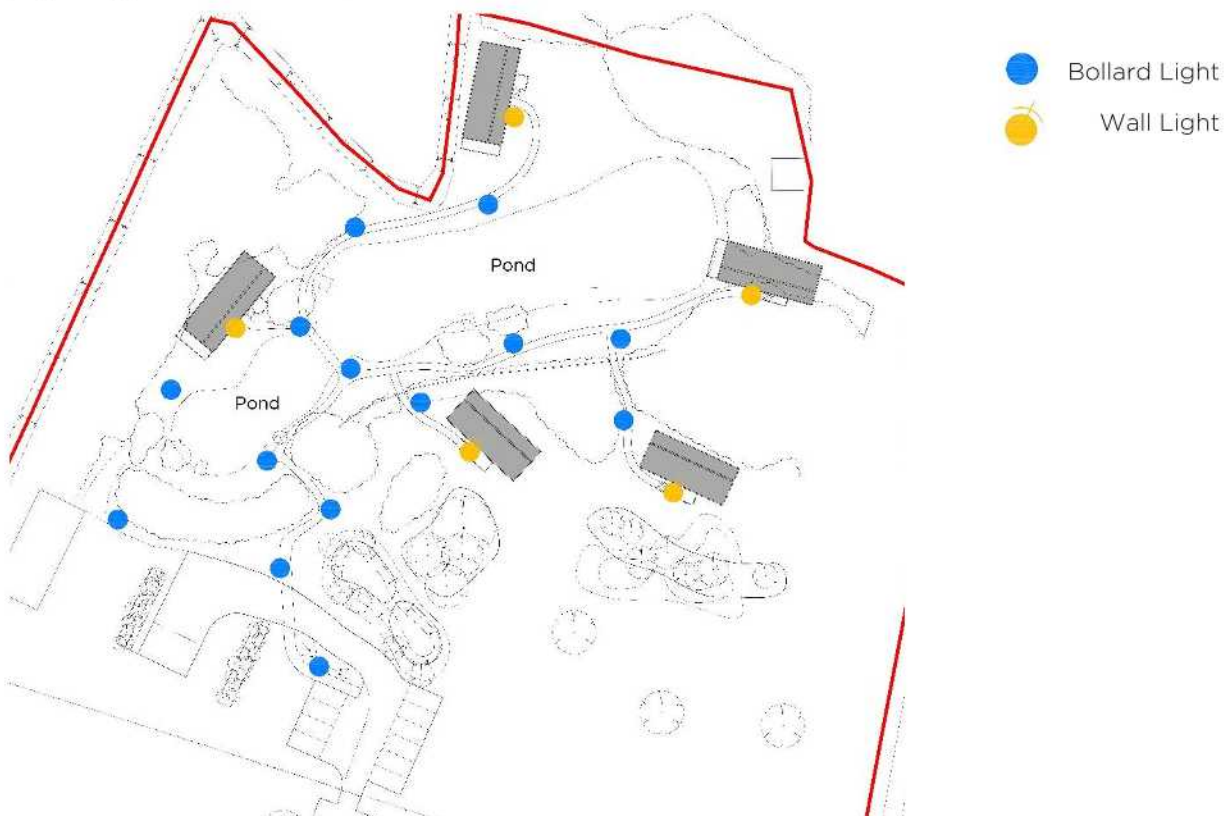
## Condition 12

*Details of the external illumination of the site including details of luminance and fields of illumination, shall be submitted to and approved in writing by the Local Planning Authority prior to any lodge being brought into use and there shall be no external illumination other than that so approved.*

*Reason: To ensure that the Local Planning Authority retains control over these matters, in the interests of the visual amenity of the overall development, to prevent light pollution and to ensure that the development is adequately lit.*

The following simple lighting solutions are proposed so as to enable way finding along paths and not to cause light pollution or effect the remote sense of place that the setting embodies.

## Lighting Location Plan



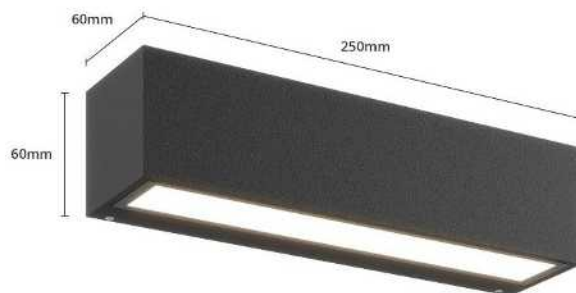
### Typical Bollard Light – Way Finding.



Pro Solar Eccentrica – Angled Solar Path Lights <https://www.lumenalights.com/>

- Finish: Black (powder coated 6063) aluminium 6063, tempered Glass
- LEDs: Epistar 3.5W, SMD 2835 LED Chips
- Lumen Output: 240lm Colour Temperature (Kelvins): Warm White – 3000K
- Beam Angle: 120° Illumination
- Sensor: Light Sensor (Photoreceptor)
- IP Rating: IP65
- Battery Type: 3.2V 6AH LiFePO4 Lithium Battery – Replaceable
- Solar Panel: 5V / 3.5W Monocrystalline Solar Panel – approx. 25-year life
- Charging Time: 6 hours (AM1.5 1000W/m<sup>2</sup>, 25°C)
- Discharge Time (from full charge): 23 hours
- Dimensions: Height = 800mm, Post diameter = 160mm
- Light Spread: 1.5m diameter
- Certification: UKCA, CE, RoHS

### Typical bulkhead/wall light adjacent lodge entrances.



- Lucande Lengo LED wall down light, 25 cm
- Finish: Black aluminium/glass
- LEDs: 9W total
- 230v
- Lumen Output: 897lm, Light Color: Warm White (around 3000K)
- IP Rating: IP65.
- Light Spread: c1.5m
- 5 year guarantee

Typical lighting to decking areas.



- Finish: Black (ABS Plastic), PVC white plastic diffuser
- LEDs: Epistar 3.5W, SMD 2835 LED Chips
- Lumen Output: 12lm, Light Color: Warm White (around 3000K)
- Solar Panel: Monocrystalline panels.
- Run Time: 6 Hours from full charged
- Automatic Operation, dusk and dawn sensor with individual switching.
- Battery backup: Rechargeable Ni-MH or Lithium-Ion (mAh indicates capacity, e.g., 800mAh, 2000mAh) for extended run time.
- IP Rating: IP44.
- Post Size Compatibility: Adjustable with adapters for common post sizes (3" or 4").
- Light Spread: c1m diameter