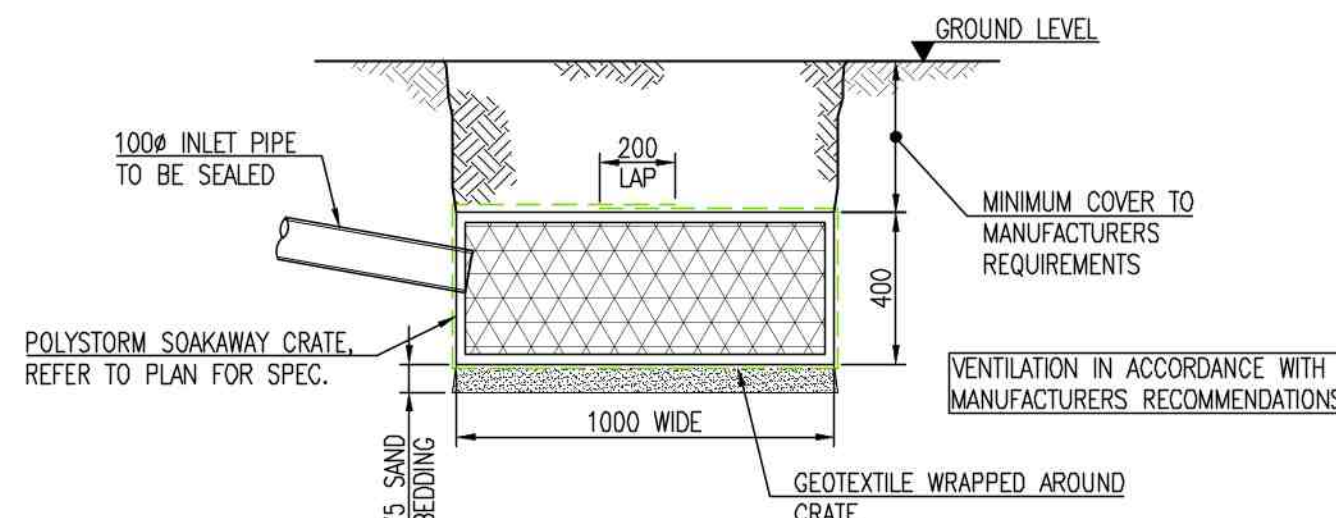
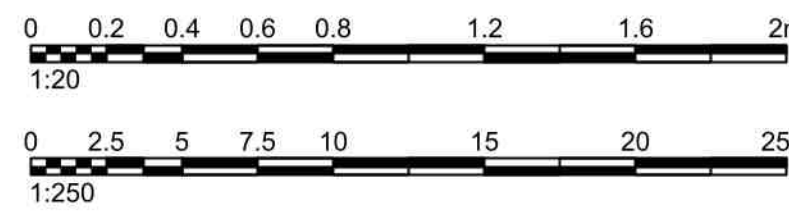


PLEASE REFER TO ARCHITECTS DRAWINGS FOR  
CONFIRMATION OF ALL WALL/SETTING OUT  
DIMENSIONS PRIOR TO COMMENCING OF WORKS

THIS DRAWING MUST BE READ IN CONJUNCTION  
WITH ALL RELEVANT DRAWINGS & STRUCTURAL  
CALCULATIONS



TYPICAL SOAKAWAY CRATE DETAIL  
SCALE 1:20



—	FIRST ISSUE — FOR INFORMATION	MRB	APW	12.12.25
REV.	DESCRIPTION	DRN.	APP.	DATE

**SHIELDS WILSON**  
e: info@shieldswilson.co.uk t: 01775 729252  
STRUCTURAL AND CIVIL ENGINEERING

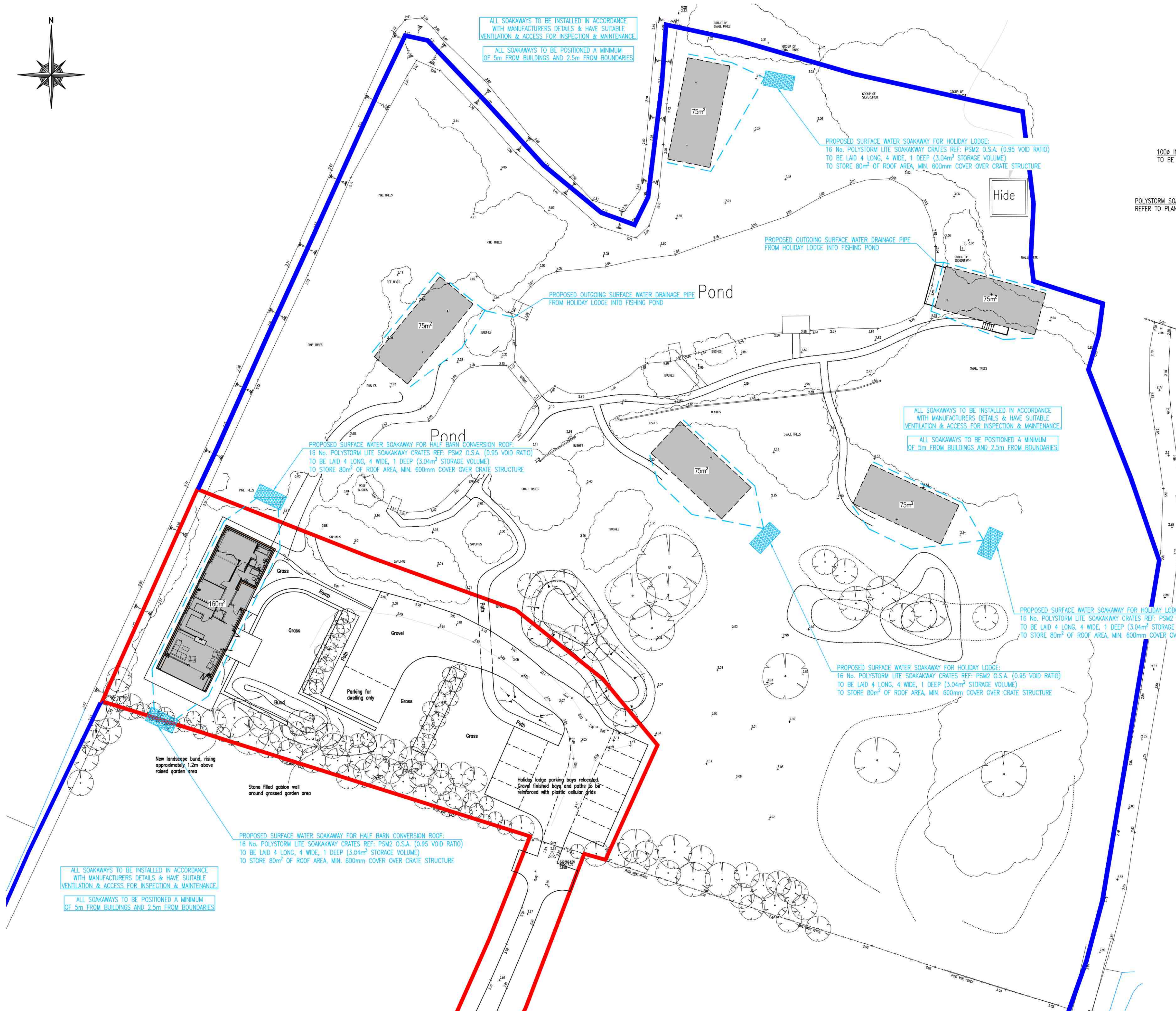
STATUS FOR INFORMATION

CLIENT PAUL GREENAWAY

PROJECT PROPOSED DRAINAGE SCHEME  
5 HOLIDAY LODGES & BARN CONVERSION  
LAND OFF A151, MOULTON, LINCOLNSHIRE

TITLE PROPOSED SOAKAWAY ARRANGEMENT

DATE	DEC '25	SCALE	0/1 1:250 1:20	DRAWING NO.	SW25-389-001	REV.	—
DRAWN	MRB						



ALL SOAKAWAYS TO BE INSTALLED IN ACCORDANCE  
WITH MANUFACTURERS DETAILS & HAVE SUITABLE  
VENTILATION & ACCESS FOR INSPECTION & MAINTENANCE

ALL SOAKAWAYS TO BE POSITIONED A MINIMUM  
OF 5m FROM BUILDINGS AND 2.5m FROM BOUNDARIES

ALL SOAKAWAYS TO BE INSTALLED IN ACCORDANCE  
WITH MANUFACTURERS DETAILS & HAVE SUITABLE  
VENTILATION & ACCESS FOR INSPECTION & MAINTENANCE

ALL SOAKAWAYS TO BE POSITIONED A MINIMUM  
OF 5m FROM BUILDINGS AND 2.5m FROM BOUNDARIES

PROPOSED SURFACE WATER SOAKAWAY FOR HOLIDAY LODGE:  
16 No. POLYSTYROM LITE SOAKAWAY CRATES REF: PSM2 O.S.A. (0.95 VOID RATIO)  
TO BE LAID 4 LONG, 4 WIDE, 1 DEEP (3.04m<sup>3</sup> STORAGE VOLUME)  
TO STORE 80m<sup>2</sup> OF ROOF AREA, MIN. 600mm COVER OVER CRATE STRUCTURE

PROPOSED OUTGOING SURFACE WATER DRAINAGE PIPE  
FROM HOLIDAY LODGE INTO FISHING POND

PROPOSED OUTGOING SURFACE WATER DRAINAGE PIPE  
FROM HOLIDAY LODGE INTO FISHING POND

PROPOSED SURFACE WATER SOAKAWAY FOR HALF BARN CONVERSION ROOF:  
16 No. POLYSTYROM LITE SOAKAWAY CRATES REF: PSM2 O.S.A. (0.95 VOID RATIO)  
TO BE LAID 4 LONG, 4 WIDE, 1 DEEP (3.04m<sup>3</sup> STORAGE VOLUME)  
TO STORE 80m<sup>2</sup> OF ROOF AREA, MIN. 600mm COVER OVER CRATE STRUCTURE

ALL SOAKAWAYS TO BE INSTALLED IN ACCORDANCE  
WITH MANUFACTURERS DETAILS & HAVE SUITABLE  
VENTILATION & ACCESS FOR INSPECTION & MAINTENANCE

ALL SOAKAWAYS TO BE POSITIONED A MINIMUM  
OF 5m FROM BUILDINGS AND 2.5m FROM BOUNDARIES

PROPOSED SURFACE WATER SOAKAWAY FOR HOLIDAY LODGE:  
16 No. POLYSTYROM LITE SOAKAWAY CRATES REF: PSM2 O.S.A. (0.95 VOID RATIO)  
TO BE LAID 4 LONG, 4 WIDE, 1 DEEP (3.04m<sup>3</sup> STORAGE VOLUME)  
TO STORE 80m<sup>2</sup> OF ROOF AREA, MIN. 600mm COVER OVER CRATE STRUCTURE

PROPOSED SURFACE WATER SOAKAWAY FOR HOLIDAY LODGE:  
16 No. POLYSTYROM LITE SOAKAWAY CRATES REF: PSM2 O.S.A. (0.95 VOID RATIO)  
TO BE LAID 4 LONG, 4 WIDE, 1 DEEP (3.04m<sup>3</sup> STORAGE VOLUME)  
TO STORE 80m<sup>2</sup> OF ROOF AREA, MIN. 600mm COVER OVER CRATE STRUCTURE

PROPOSED SURFACE WATER SOAKAWAY FOR HALF BARN CONVERSION ROOF:  
16 No. POLYSTYROM LITE SOAKAWAY CRATES REF: PSM2 O.S.A. (0.95 VOID RATIO)  
TO BE LAID 4 LONG, 4 WIDE, 1 DEEP (3.04m<sup>3</sup> STORAGE VOLUME)  
TO STORE 80m<sup>2</sup> OF ROOF AREA, MIN. 600mm COVER OVER CRATE STRUCTURE

New landscape bund, rising  
approximately 1.2m above  
raised garden area

Stone filled gabion wall  
around grassed garden area

Holiday lodge parking bays relocated.  
Gravel finished bays and paths to be  
reinforced with plastic cellular grids