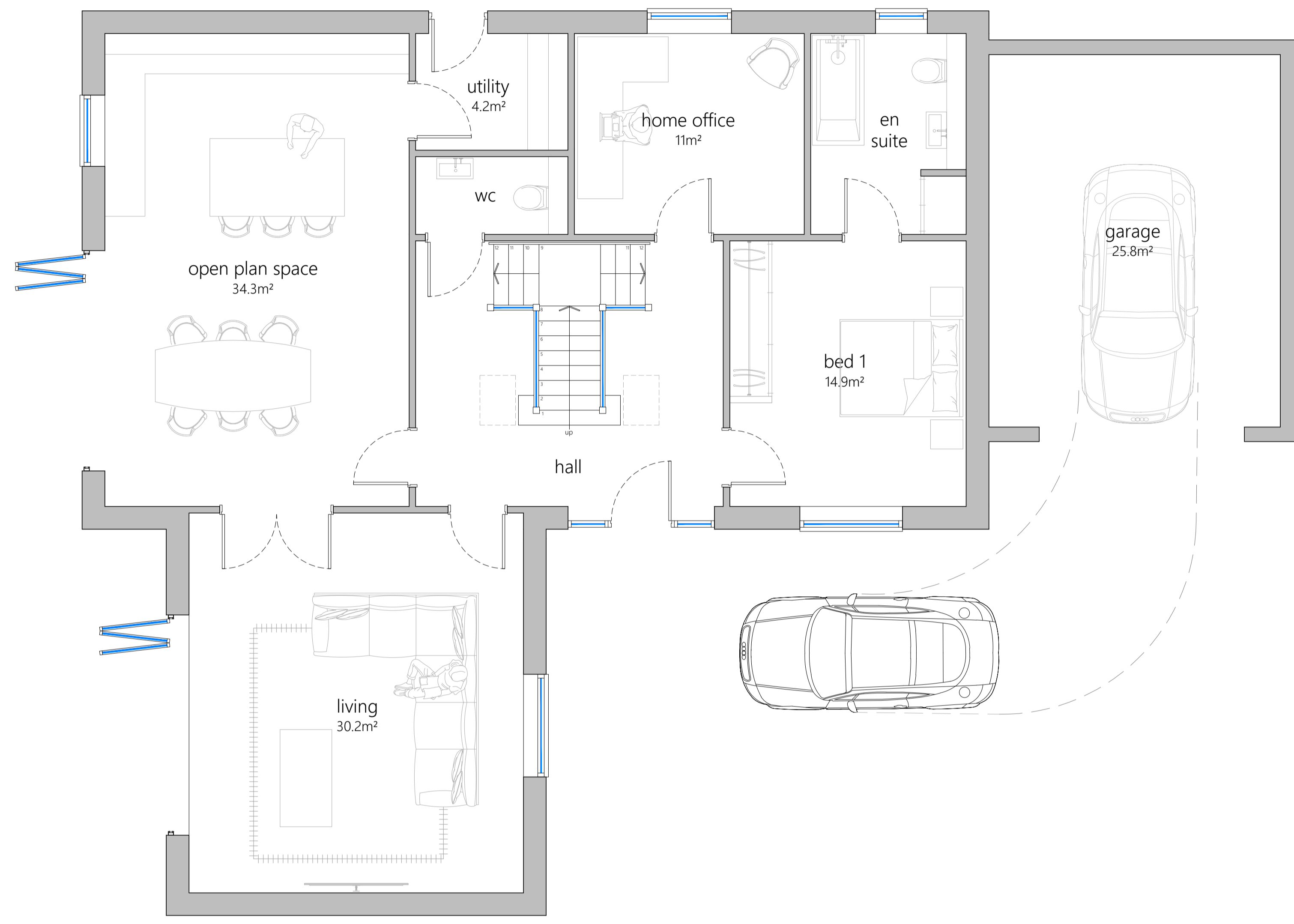
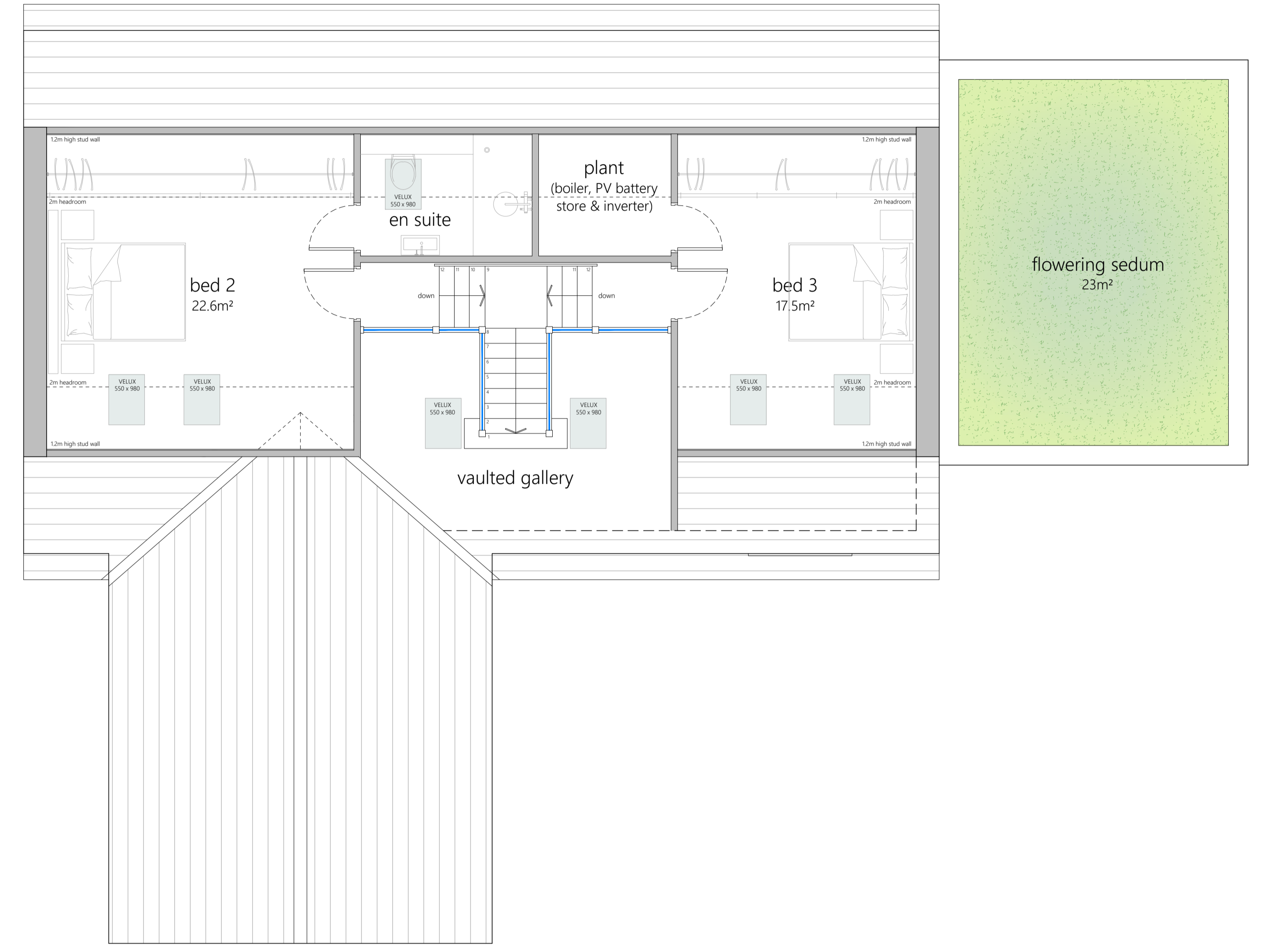


rev.	revision	date



ground floor plan  
GIFA = 127.8m<sup>2</sup> or 1,375ft<sup>2</sup>

TOTAL GIFA = 191.7m<sup>2</sup> or 2,063ft<sup>2</sup> (excl. garage)



first floor plan  
GIFA = 63.9m<sup>2</sup> or 688ft<sup>2</sup>

Proposed residential development  
Land to rear 24 Broad Lane,  
Moulton, Spalding.  
for Woodola Group Ltd



<b>cdm.</b>	<b>DESIGN</b>
PLANNING APPLICATION - plot 2 floor plans	
1:50 @ A1	OCT 2024
scale(s)	date
CDM	
drawing title	
drawing no.	
113W.2024.14	