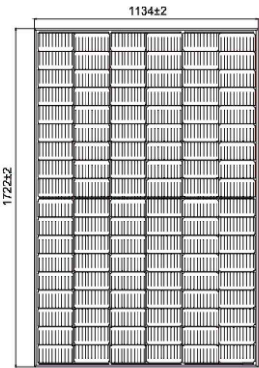


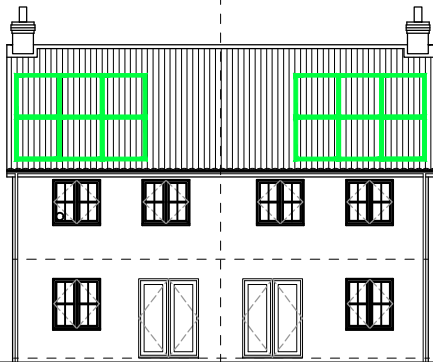
MONKS HOUSE LANE, SPALDING

NOTES:
The details depicted on this drawing are the copyright to Seagate Homes and may not be reproduced without permission. This drawing must not be re-issued, loaned or copied without the consent. Errors omissions and discrepancies should be reported to the originator immediately.
All dimensions to be checked on site prior to construction or off-site fabrication by the Contractor, his Sub-contractor or Supplier.
Do not scale plans - use figure or grid dimensions where given.
Any deviation from the drawing is to be reported to the originator immediately.
IF IN DOUBT ASK !

PV panels shown are based on 410W as below image



Plot 1 - S301 V4
5 Panels - South West Facing



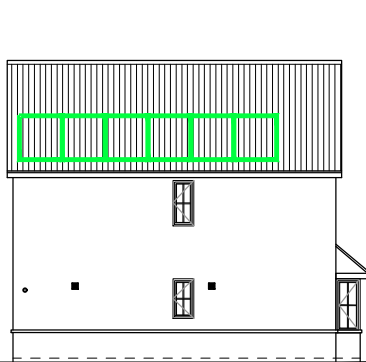
Plots 2-5 - S303 V4
6 Panels - East Facing



Plot 6 - S318 V2
5 Panels - South West Facing



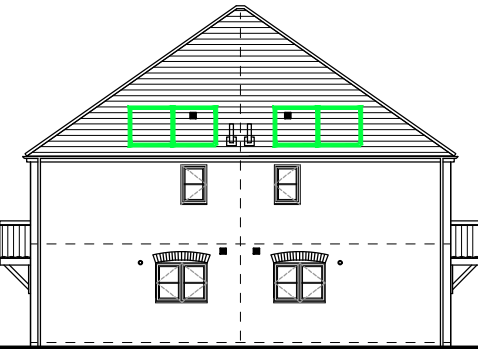
Plot 7 - S319 V2
5 Panels - South West Facing



Plot 8 - S312 V2
6 Panels - South West Facing



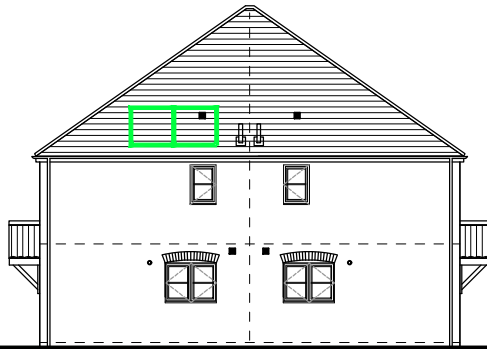
Plot 11 - S102
2 Panels - South West Facing



Plots 9 & 10 - S102
2 Panels - South East Facing



Plot 12 - S102
4 Panels - North/East Facing



Plots 13-16 - S213 V3
4 Panels - South West Facing



Plot 17 - S312 V2
5 Panels - South Facing



Plot 18 - S319 V2
5 Panels - South Facing



Plot 19 - S318 V2
5 Panels - South West Facing



Plots 20-23 - S213 V3
4 Panels - South West Facing



Plots 24-26 - S213 V3
4 Panels - South West Facing

P01	First Issue	06.03.25	WK
Rev	Notes	Date	By



Project:
PROPOSED RESIDENTIAL DEVELOPMENT,
OFF MONKS HOUSE LANE, SPALDING, Lincs

Drawing:
PV ELEVATION SHEET 1 OF 3

Drawn: WK Date: MARCH 2025

Status: PRELIMINARY Scale: 1:200 @A3

Drawing Number:
20015-SGH-DR-AR-1015