

MONKS HOUSE LANE, SPALDING

Plots 24, 25, 26, 33, 34, 35, 48, 49, 50, 51, 52, 53

NOTES:

The details depicted on this drawing are the copyright of Seagate Homes and may not be reproduced without permission. This drawing must not be re-issued, loaned or copied without the consent. Errors omissions and discrepancies should be reported to the originator immediately.

All dimensions to be checked on site prior to construction or off-site fabrication by the Contractor, his Sub-contractor or Supplier.

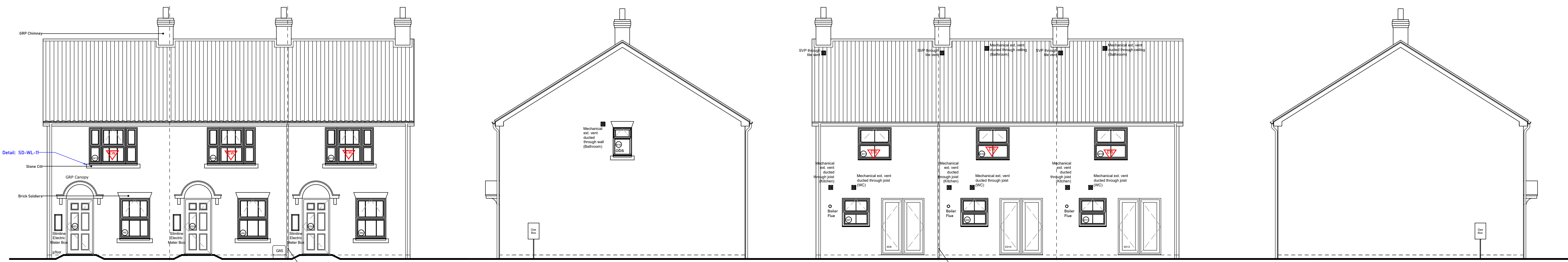
Do not scale plans - use figure or grid dimensions where given. Any deviation from the drawing is to be reported to the originator immediately.

IF IN DOUBT ASK!

HouseType 213 (Terrace) - Structural Opening Schedule

Ref	Description	Size (width x height)	Notes
ED1	Entrance Door	1030mm x 2100mm	
W2	Window	1155mm x 1500mm	
ED3	Entrance Door	1030mm x 2100mm	
W4	Window	1155mm x 1500mm	
ED5	Entrance Door	1030mm x 2100mm	
W6	Window	1155mm x 1500mm	
W7	Window	1010mm x 1050mm	
ED8	Patio Doors	1585mm x 2100mm	Safety Glazing
W9	Window	1010mm x 1050mm	
ED10	Patio Doors	1585mm x 2100mm	Safety Glazing
W11	Window	1010mm x 1050mm	
ED12	Patio Doors	1585mm x 2100mm	Safety Glazing
W13	Window	1790mm x 1350mm	Escape window
W14	Window	1790mm x 1350mm	Escape window
W15	Window	1790mm x 1350mm	Escape window
W16	Window	685mm x 1050mm	Obscured & Top Hung
W17	Window	1225mm x 1200mm	Escape window
W18	Window	1225mm x 1200mm	Escape window
W19	Window	1225mm x 1200mm	Escape window

Escape windows to have minimum opening size of 450mm in each direction and a minimum area of 0.33 sq.m in accordance with Part B of Building Regulations

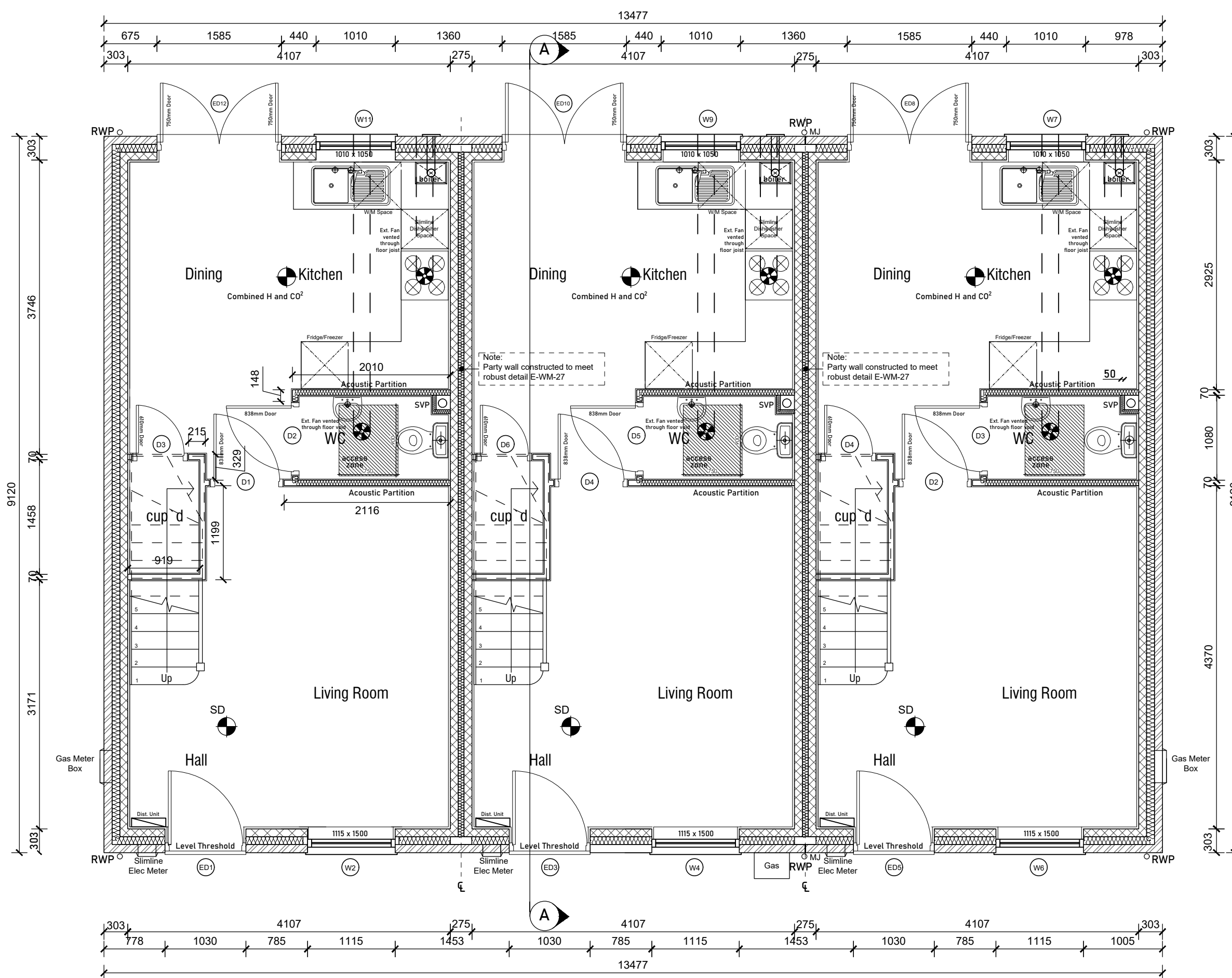


Front Elevation

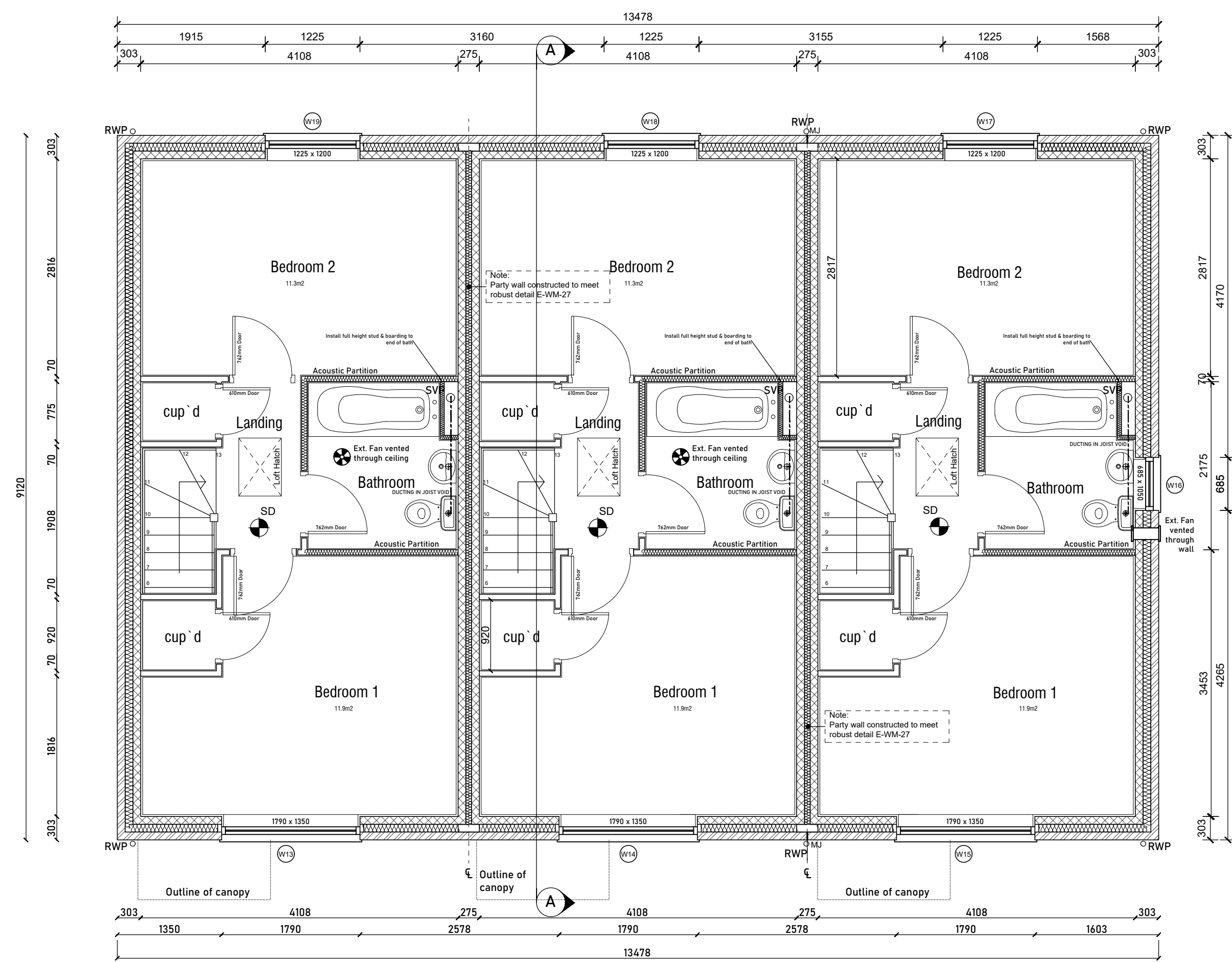
Right Elevation

Rear Elevation

Left Elevation



Ground Floor Plan



First Floor Plan

P01	First Issue	13.08.24	WK
Rev	Notes	Date	By



Project: PROPOSED RESIDENTIAL DEVELOPMENT
MONKS HOUSE LANE, SPALDING, Lincs

Drawing: HOUSE TYPE S213 V3 TERRACE
PLANS AND ELEVATIONS

Drawn: WK Date: JULY 2024

Status: PRELIMINARY Scale: 1:50 & 1:100 @ A1

Drawing Number: 20015-SGH-DR-AR-2005 Issue: P01