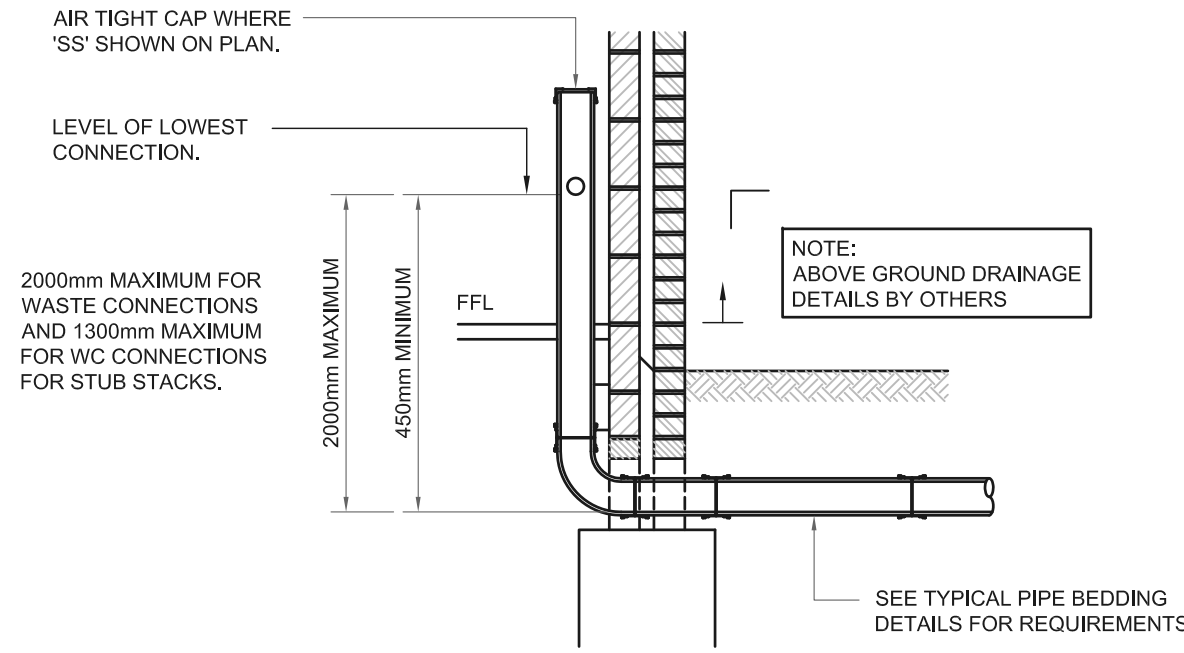
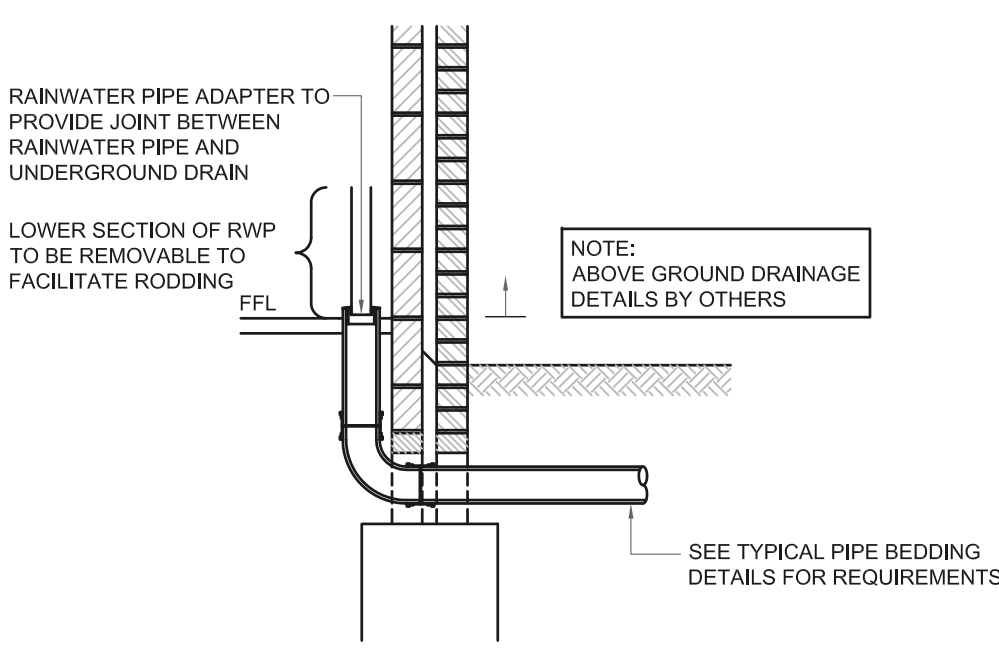


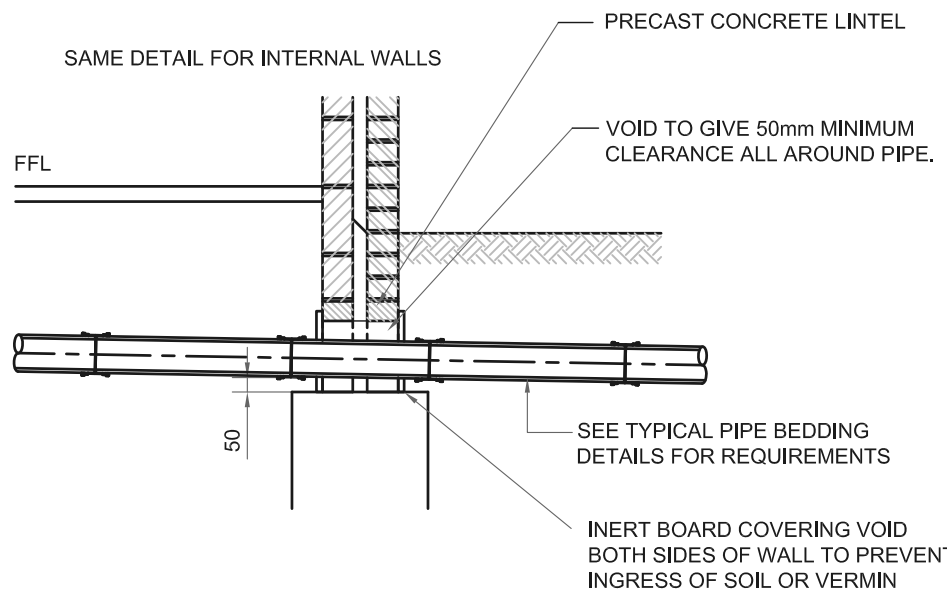
TYPICAL WC CONNECTION DETAIL  
SCALE 1:25



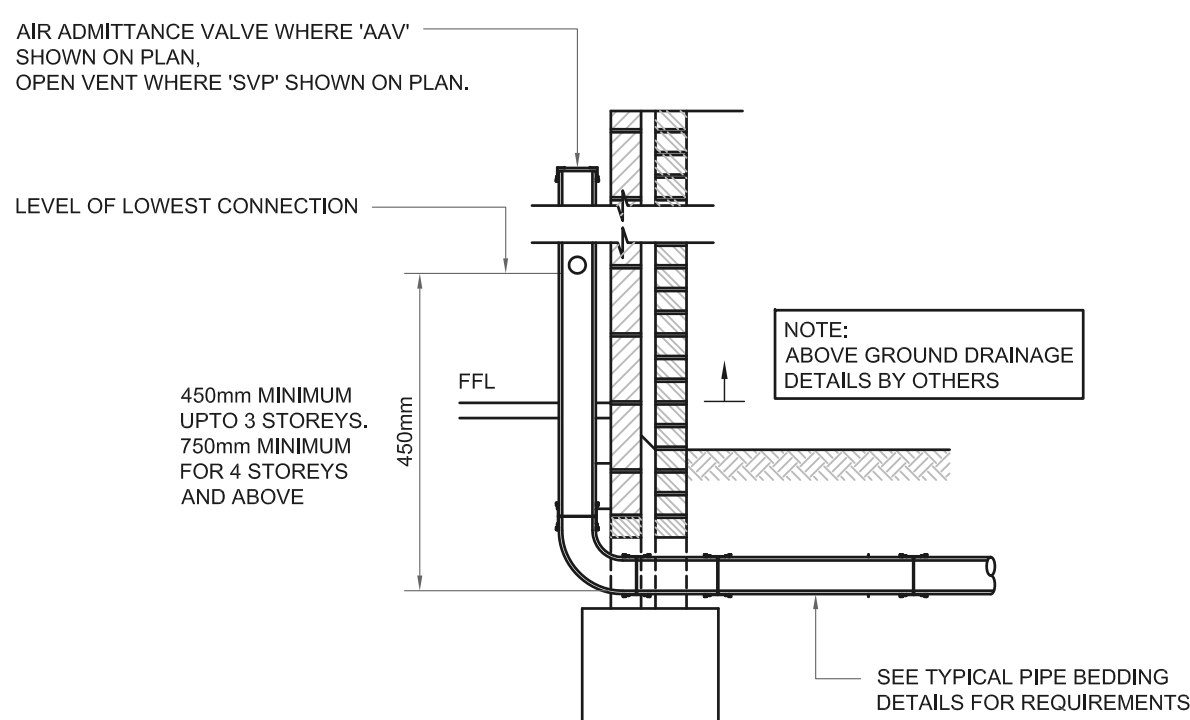
TYPICAL STUB STACK PIPE (SS)  
CONNECTION DETAIL  
SCALE 1:25



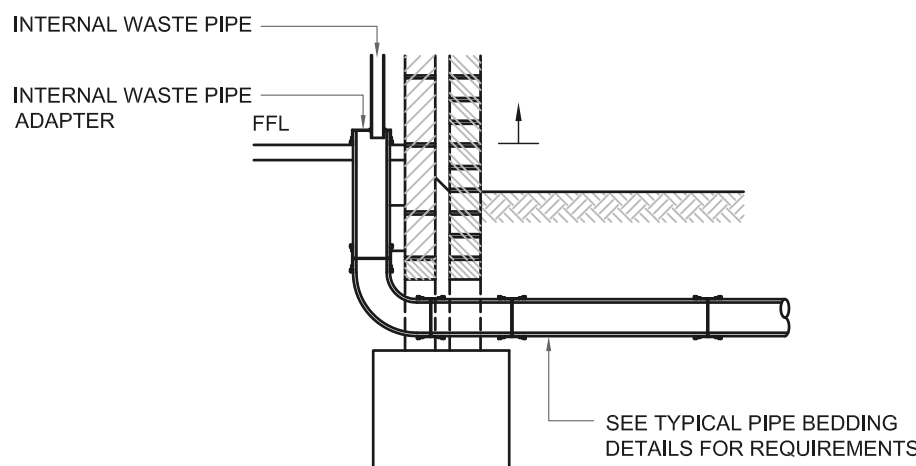
TYPICAL RAINWATER PIPE  
CONNECTION POINT DETAIL  
SCALE 1:25



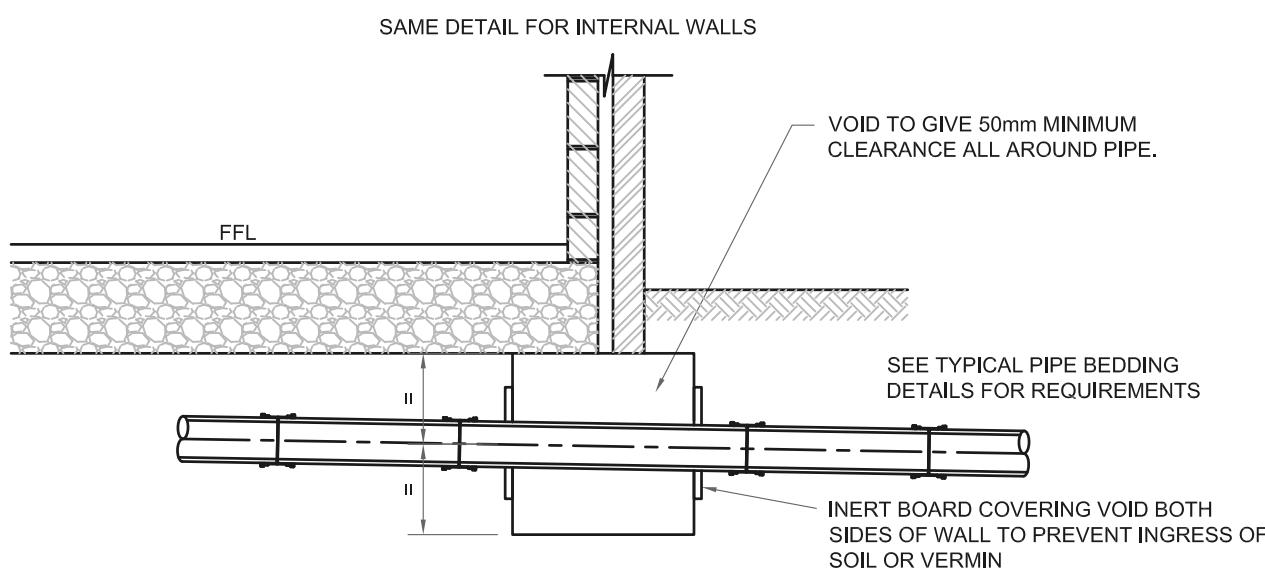
TYPICAL SECTION OF DRAIN PASSING  
OVER FOUNDATION  
SCALE 1:25



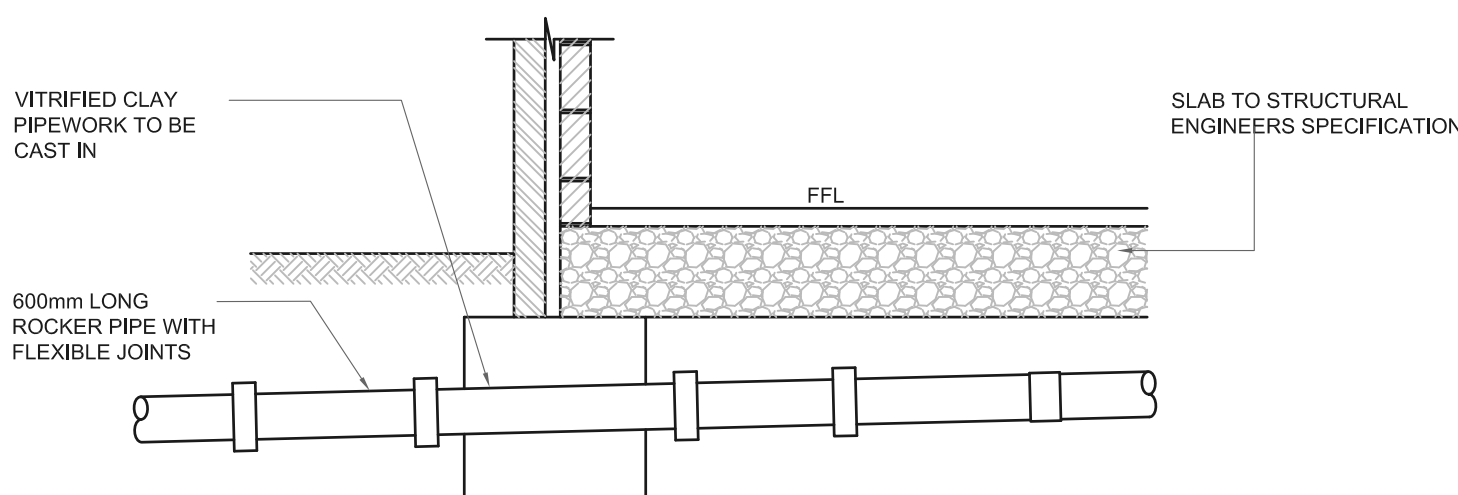
TYPICAL SOIL VENT PIPE (SVP)  
CONNECTION DETAIL  
SCALE 1:25



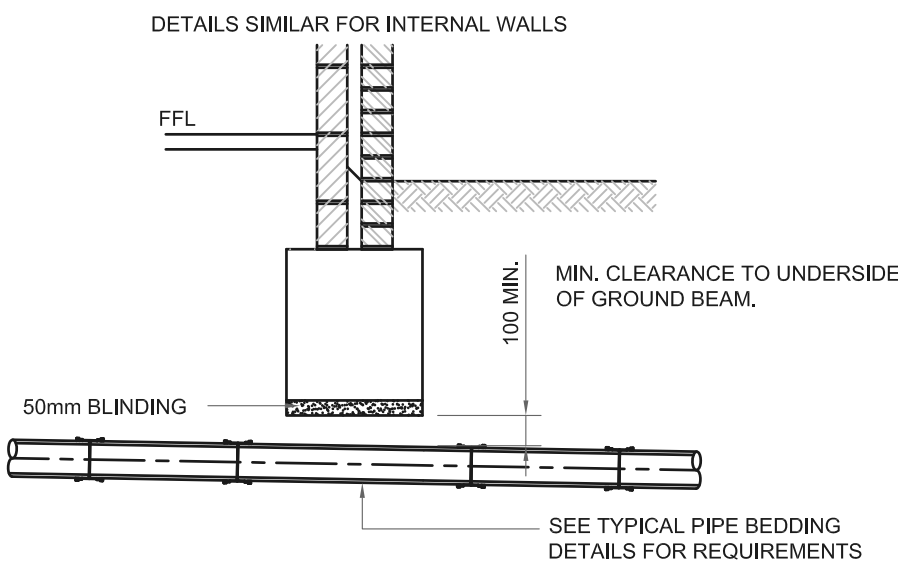
TYPICAL INTERNAL WASTE  
PIPE CONNECTION DETAIL  
SCALE 1:25



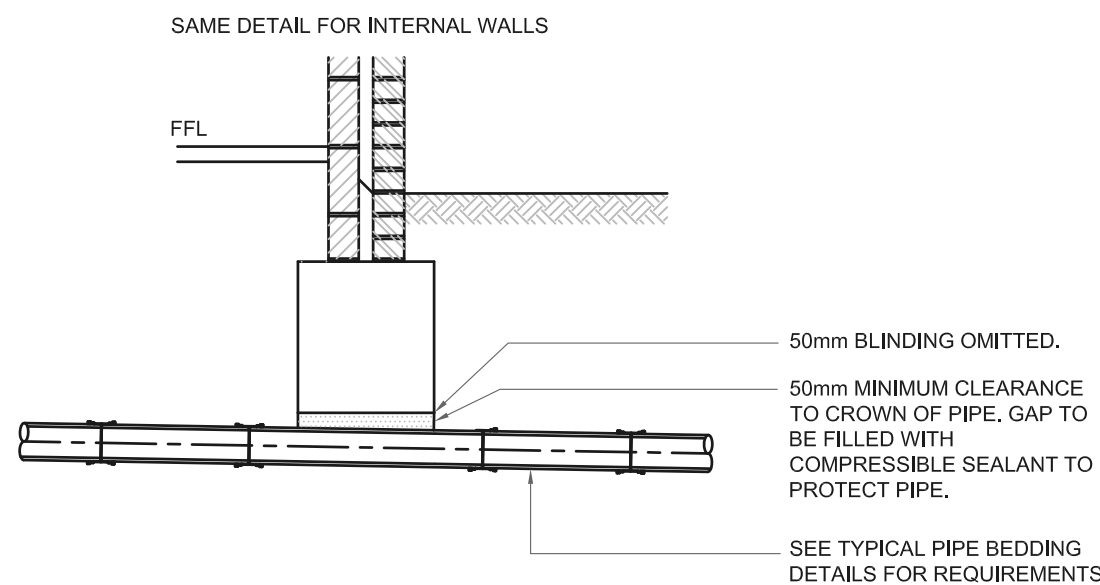
TYPICAL DETAIL OF UPVC DRAIN PASSING  
THROUGH FOUNDATION  
SCALE 1:25



TYPICAL DETAIL OF VC DRAIN PASSING  
THROUGH FOUNDATION  
SCALE 1:25



TYPICAL DETAIL OF DRAIN PASSING  
UNDER FOUNDATION - ALTERNATIVE 1  
SCALE 1:25



TYPICAL DETAIL OF DRAIN PASSING  
UNDER FOUNDATION- ALTERNATIVE 2  
SCALE 1:25

NOTE:  
WALLS FLOORS & FOUNDATIONS  
SHOWN ON THIS DRAWING ARE  
INDICATIVE ONLY.  
REFER TO STRUCTURAL ENGINEERS  
DRAWINGS FOR TYPICAL  
WALL/FLOOR/FOUNDATIONS  
SECTIONS.

TABLE B	
INSITU CONCRETE FOR USE IN GENERAL DRAINAGE WORKS	
CLASS 1 SULPHATE CONDITIONS:	
ADAPTABLE STANDARD WORKS AND AREAS SUBJECT TO HEAVY LOADING	GEN 3 or ST4
AREAS SUBJECT TO LIGHT LOADING eg. HOUSING AND PRIVATE DRIVES, SMALL CAR PARKS.	GEN1 or ST2
FOR BURIED CONCRETE EXPOSED TO OTHER SULFATE CONDITIONS:	
CLASS 2 CLASS 3 CLASS 4A CLASS 4B	FND 2 FND 3 FND 4A FND 4B

NOTES  
CONTRACTORS MUST VERIFY ALL DIMENSIONS ON SITE BEFORE COMMENCING ANY WORK ON SHOP DRAWINGS  
DO NOT SCALE FROM THIS DRAWING  
RCD CONSULTANTS LTD COPYRIGHT

- NOTES
1. ALL DIMENSIONS IN MILLIMETERS UNLESS STATED OTHERWISE.
  2. DRAWING TO BE FOLLOWED IN CONJUNCTION WITH ALL ACCOMPANYING DRAWINGS AND SPECIFICATIONS AS LISTED IN THE CONTRACT DOCUMENTS.
  3. ALL BUILDING DRAINAGE TO BE INSTALLED AND TESTED IN COMPLIANCE WITH THE BUILDING REGULATIONS 2000 DRAINAGE AND WASTE DISPOSAL APPROVED DOCUMENT H 2002 EDITION.
  4. ALL COMPONENTS AND MATERIALS ARE TO BE MANUFACTURED AND SUPPLIED IN ACCORDANCE WITH THE RELEVANT BRITISH STANDARDS, AND LAID AND BACKFILLED IN ACCORDANCE WITH MANUFACTURERS INSTRUCTIONS AND THE RELEVANT BRITISH STANDARDS.
  5. THE CONTRACTOR SHALL, BEFORE COMMENCING THE WORKS, VERIFY ALL SITE AND SETTING OUT DIMENSIONS. THE CONTRACTOR SHALL BE RESPONSIBLE FOR THE TRUE AND PROPER SETTING OUT OF THE WORKS AND FOR THE CORRECTNESS OF THE POSITION, LEVELS, DIMENSIONS, AND ALIGNMENT OF ALL PARTS OF THE WORKS.
  6. SMALL LIGHTWEIGHT ACCESS COVERS SHOULD BE SECURED (FOR EXAMPLE WITH SCREWS) TO DETER UNAUTHORISED ACCESS.
  7. INSPECTION CHAMBERS AND MANHOLES IN BUILDINGS TO HAVE MECHANICALLY FIXED AIRTIGHT COVERS UNLESS THE DRAIN ITSELF HAS WATERTIGHT ACCESS COVERS.
  8. MANHOLES DEEPER THAN 1m TO HAVE GALVANISED STEEL STEP IRONS OR FIXED LADDERS.
  9. ALL ABOVE GROUND DRAINAGE TO INCORPORATE RODDING ACCESS FACILITIES.
  10. INSITU CONCRETE FOR USE IN GENERAL DRAINAGE WORKS, GRADE TO BS: 5328, USE AS SHOWN IN TABLE B.
  11. FOR COVER GRADE DETAILS AND TABLE REFER TO DRAWING 50.

A	FOR APPROVAL	21.03.15	RAC
REV	AMENDMENT	DATE	CHKD

DRAWING STATUS

FOR APPROVAL

RCD

RCD CONSULTANTS LTD  
23 HASTINGS ROAD ROAD, MAIDSTONE, KENT, ME15 7SH  
MOBILE: 07702 052 137  
EMAIL: ray@rcd-uk.com

CLIENT  
RELIANT BUILDING CONTRACTORS LTD

PROJECT  
PROPOSED RESIDENTIAL DEVELOPMENT  
KINGS ROAD  
SPALDING

DRAWING TITLE  
DRAINAGE  
CONSTRUCTION DETAILS  
SHEET 3 OF 3

CIVILS

SCALE  
AS SHOWN  
AT A1

DRAWN BY  
RAC

CHECKED  
MGC

DATE  
MAR 2015

DRAWING NUMBER  
1151-1004-CIV-51

REVISION  
A