

DO NOT SCALE THIS DRAWING. THE CONTRACTOR IS DEEMED TO HAVE CHECKED ALL DIMENSIONS ON SITE AND REPORT ANY DISCREPANCIES TO OGLESBY & LIMB LTD. THE CONTENTS OF THIS DRAWING ARE COVERED BY COPYRIGHT AND REMAIN THE PROPERTY OF OGLESBY & LIMB LTD. WRITTEN APPROVAL MUST BE OBTAINED FROM OGLESBY & LIMB LTD PRIOR TO DUPLICATION OR REPRODUCTION OF THIS DRAWING OR ITS CONTENTS. ANY DIMENSIONS NOT SHOWN ARE TO BE CHECKED AND AGREED WITH OGLESBY & LIMB LTD.

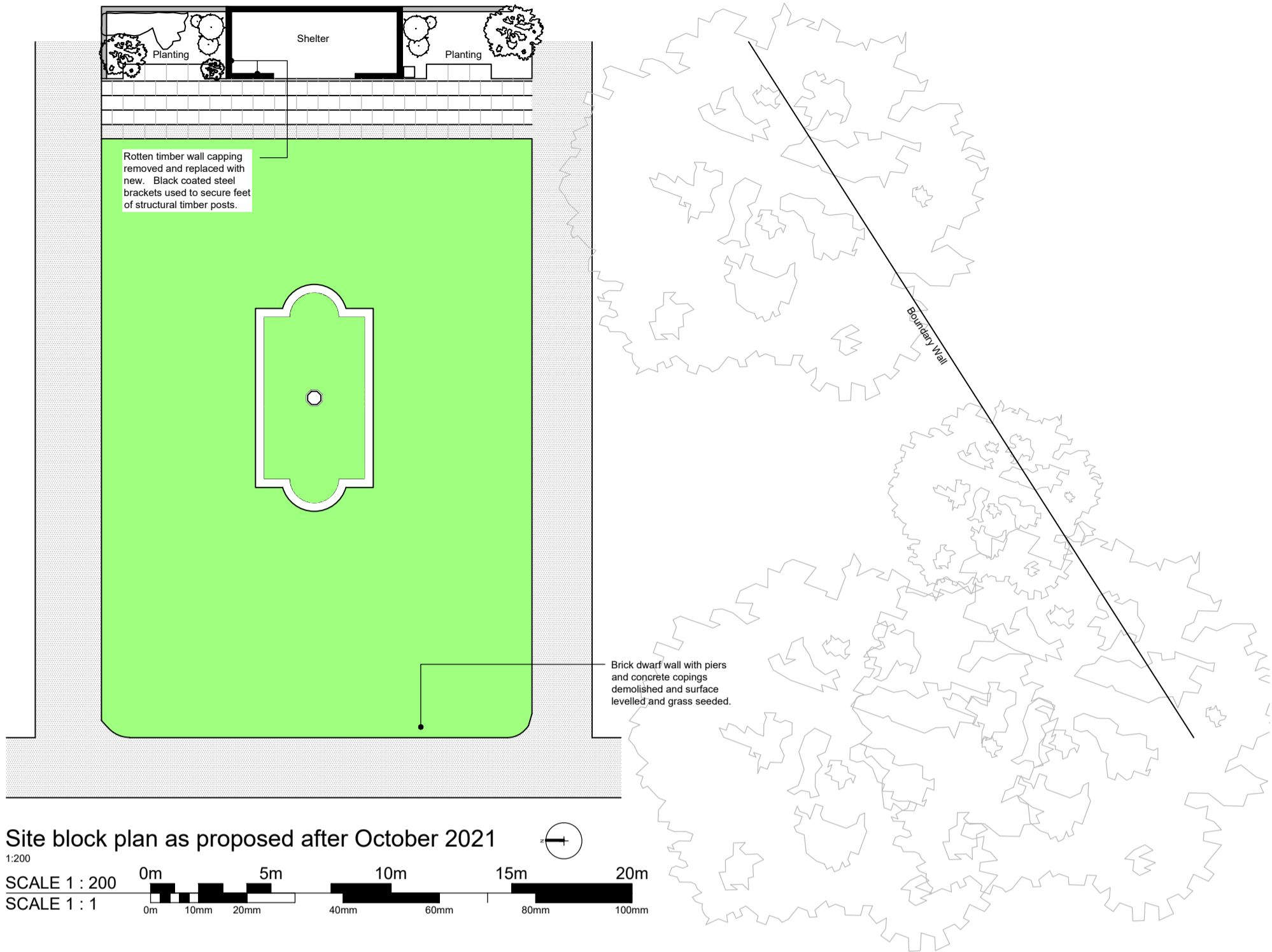
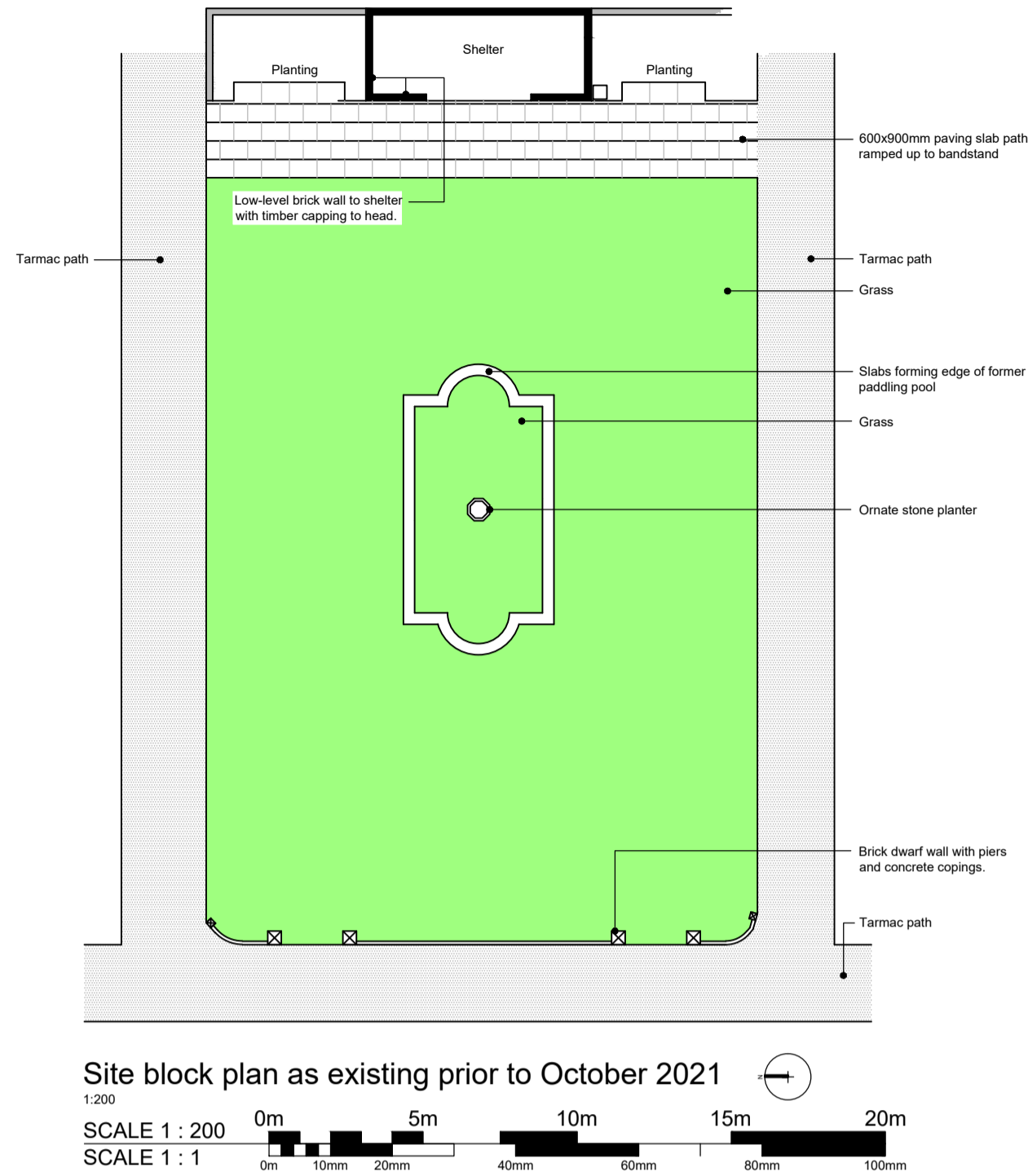
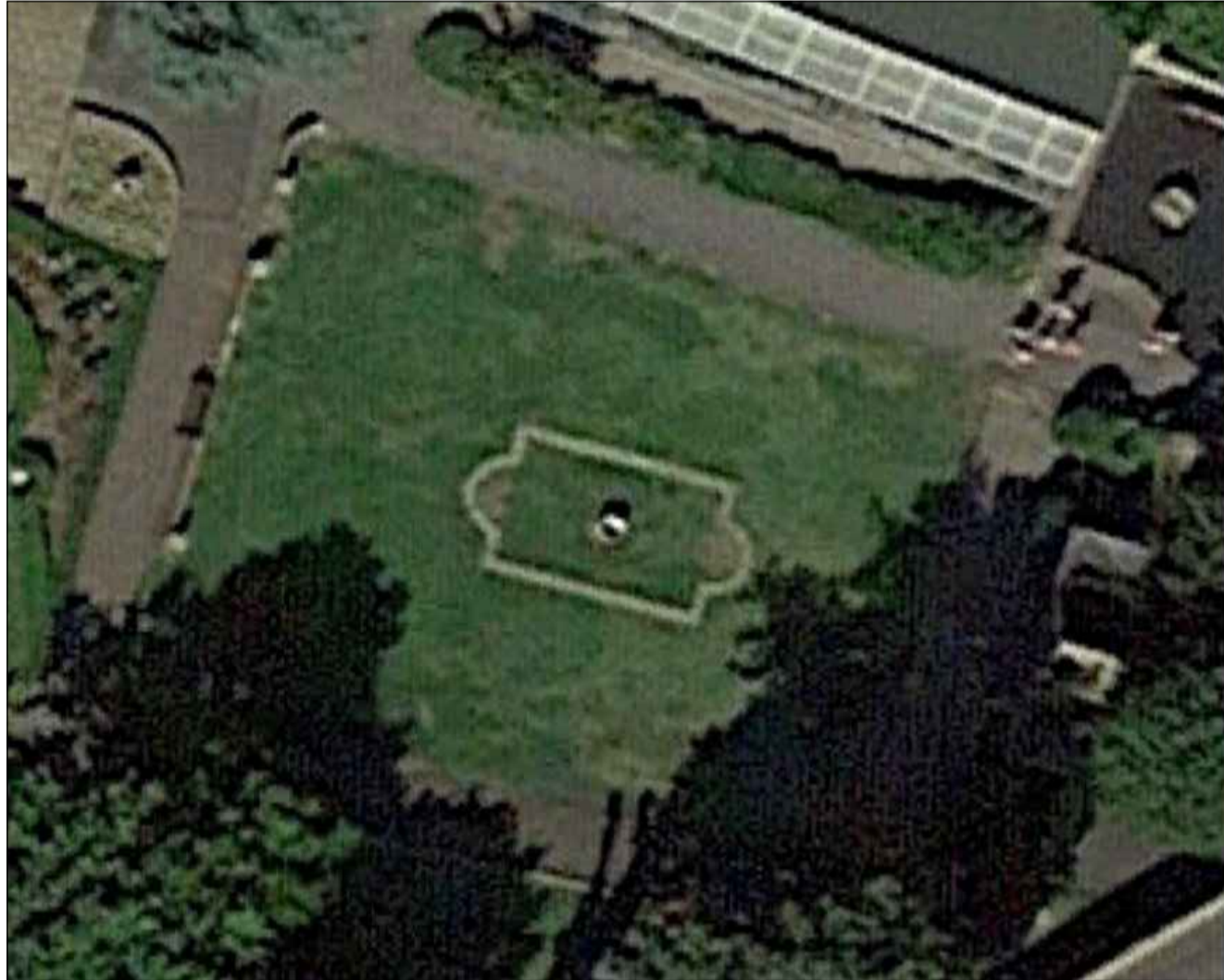


Image of shelter prior to works

Shelter repair photographs



Aerial image prior to demolition of dwarf wall



Image prior to works showing rotten timber plates



Image after to works showing new timber plates



Image after to works showing new timber plates

Dwarf wall demolition photographs



View from east prior to demolition, dwarf wall in centre ground



View from east after demolition.



Ground surface following demolition of wall



Ground surface following demolition of wall

Ref.	Date	Description	Initial
X	XX.XX.XX	XXXXX	XXX

Oglesby & Limb Ltd

Chartered Architect

Suite 1, Market Chambers
12 Market Place, Spalding, Lincs
PE11 1SL

Tel: 01775 761196

e-mail: design@o-l-ltd.co.uk

O&L

Client:
South Holland District Council

Project:
**Ayscoughfee Hall Museum & Gardens
Church Gate, Spalding, PE11 2RA**

**Proposed works to Shelter and
demolition of Dwarf Wall**

Drawing Title:

**Plans and photos as existing and as
proposed**

LBC APPLICATION ISSUE

Date:	April 2022	Scale:	as shown @ A1
Drawn by:	ajo	Checked by:	cls

Drawing Number:	Rev:
A1572-20	P1