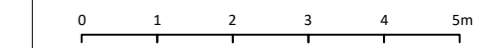


Notes
Copyright
 © Robert Doughty Consultancy Limited.
 All rights described in the Copyright, Designs and Patents Act 1988 have been asserted.
Ordnance Survey Map
 © Crown Copyright. OS Licence No: AR 100010613.
Dimensions
 All dimensions shown are for the purposes of obtaining the relevant planning permission only.
CDM 2015
 This drawing is for illustrative purposes and/or obtaining the relevant planning permission only. It should not be used for construction and accordingly, risk identification under the Construction (Design & Management) Regulations 2015 has not been undertaken.



| Rev | Description | Date |
|-----|-------------|------|
|-----|-------------|------|

rdc
 Robert Doughty
 Consultancy
 32 High Street, Helpringham
 Sleaford, Lincolnshire, NG34 0RA
 Tel: 01529 421646
 Email: admin@rdc-landplan.co.uk
 Web: www.rdc-landplan.co.uk

Client
 GJK & KF Swindells

Project
 The Mermaid Inn
 Surfleet

Drawing
 Proposed Ground and First Floor Plans

| | |
|-----------------------------|-------------------------|
| Scale @ A2 1: 100 | Date 14/07/21 |
|-----------------------------|-------------------------|

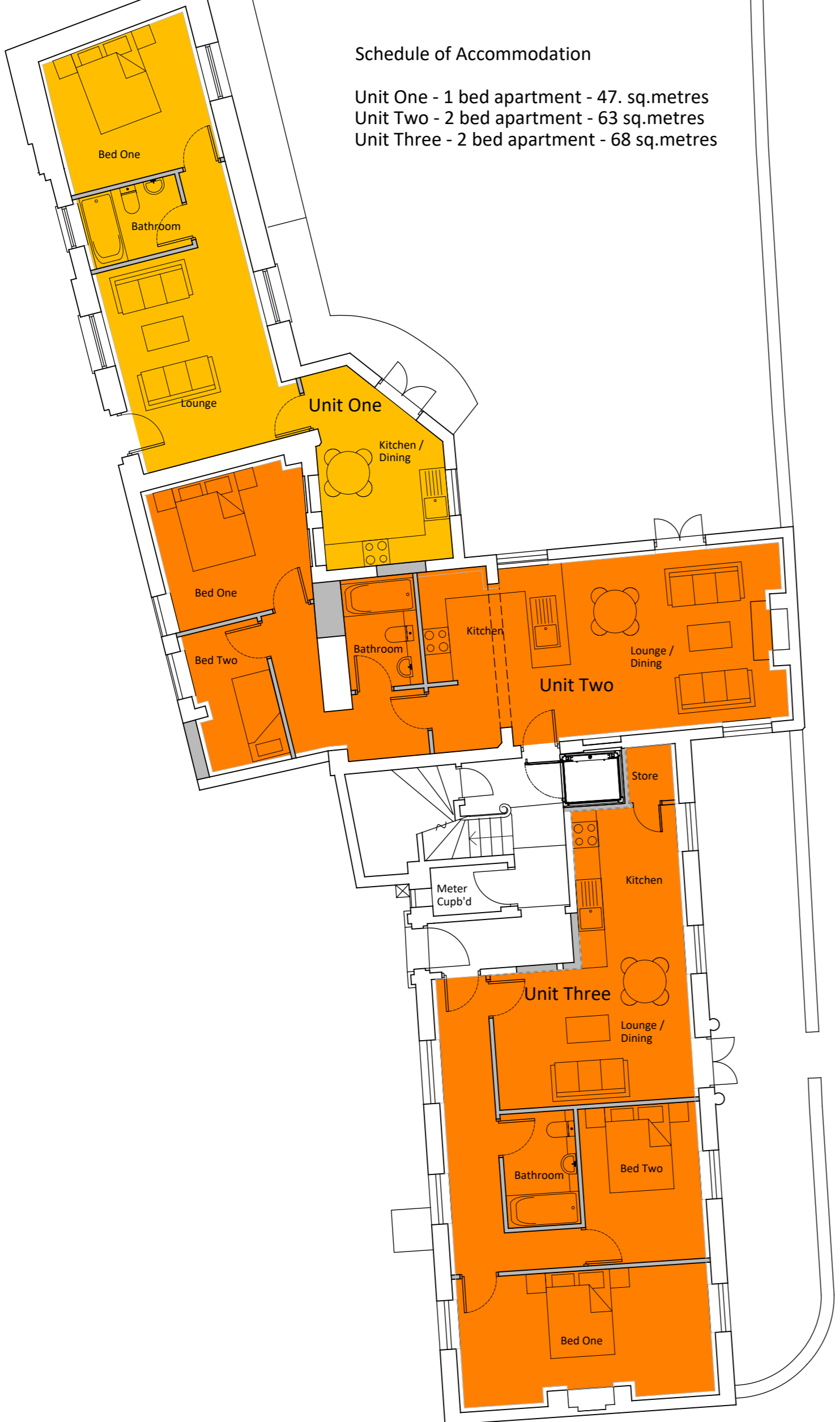
| | |
|------------------------|--------------------------|
| Drawn By PSS | Checked By PSS |
|------------------------|--------------------------|

| | | |
|-----------------------------|---------------------|-------------------------------------|
| Job Number 1447-1 | Status PL | Purpose of Issue Planning |
|-----------------------------|---------------------|-------------------------------------|

| | |
|--------------------------------------|-----------------|
| Drawing No. 1447-1_PL_PL02 | Rev - |
|--------------------------------------|-----------------|

Schedule of Accommodation

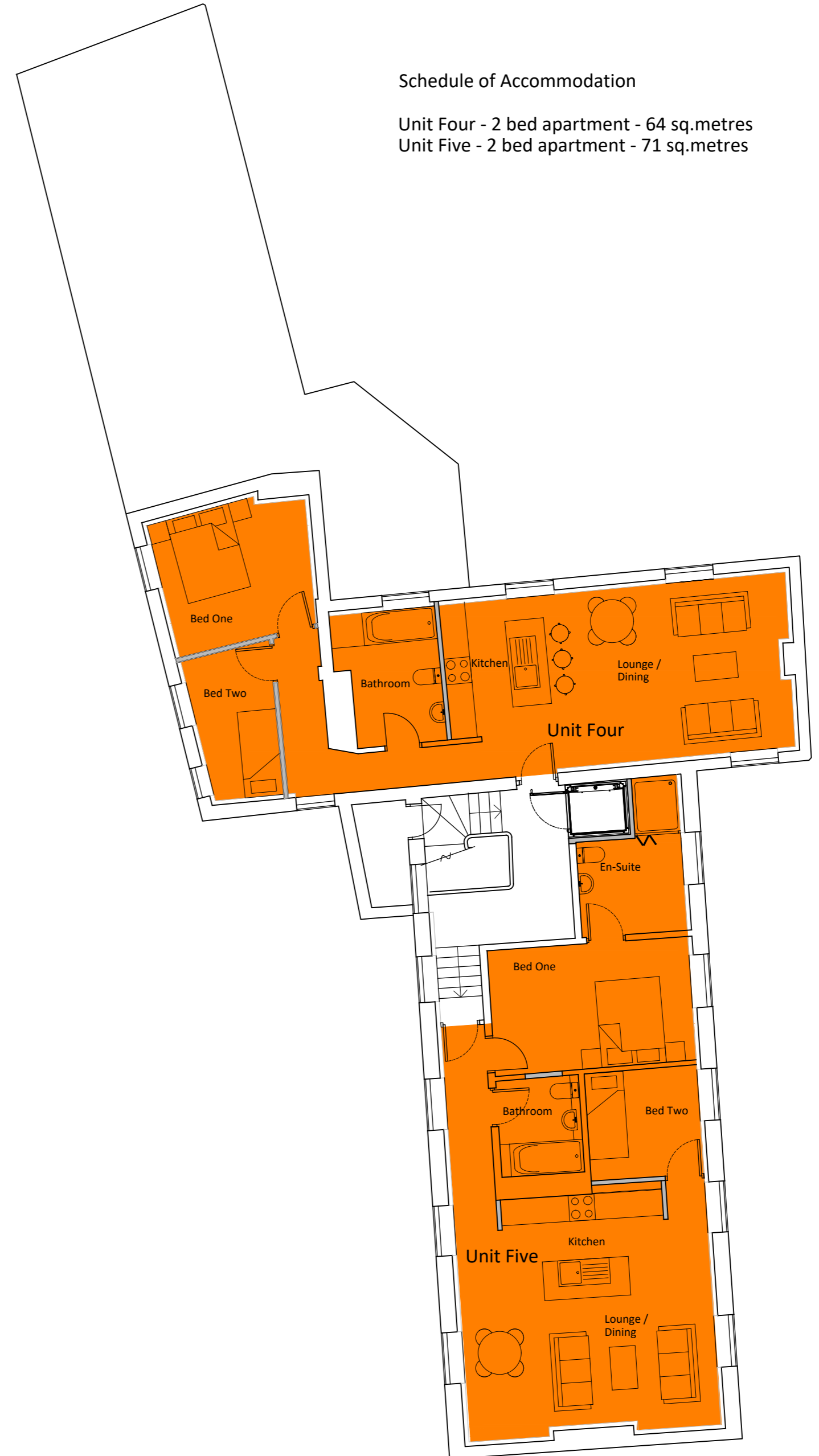
Unit One - 1 bed apartment - 47. sq.metres
 Unit Two - 2 bed apartment - 63 sq.metres
 Unit Three - 2 bed apartment - 68 sq.metres



PROPOSED GROUND FLOOR PLAN

Schedule of Accommodation

Unit Four - 2 bed apartment - 64 sq.metres
 Unit Five - 2 bed apartment - 71 sq.metres



PROPOSED FIRST FLOOR PLAN