

High visibility jackets must be worn

Protective footwear must be worn

This is a hard hat area

Danger
Stop. Look. Listen.
Beware of trucks

Caution
Construction traffic

Caution
Site entrance

SITE WORKING HOURS
To be 7.30am - 5.00pm Monday to Friday. In the event that Saturday working becomes necessary this is to be restricted to the hours of 8.00am - 1.00pm.

Materials suppliers are to be instructed not to arrive to site prior 7.30am to avoid disturbance to neighbors or potential highway obstruction.

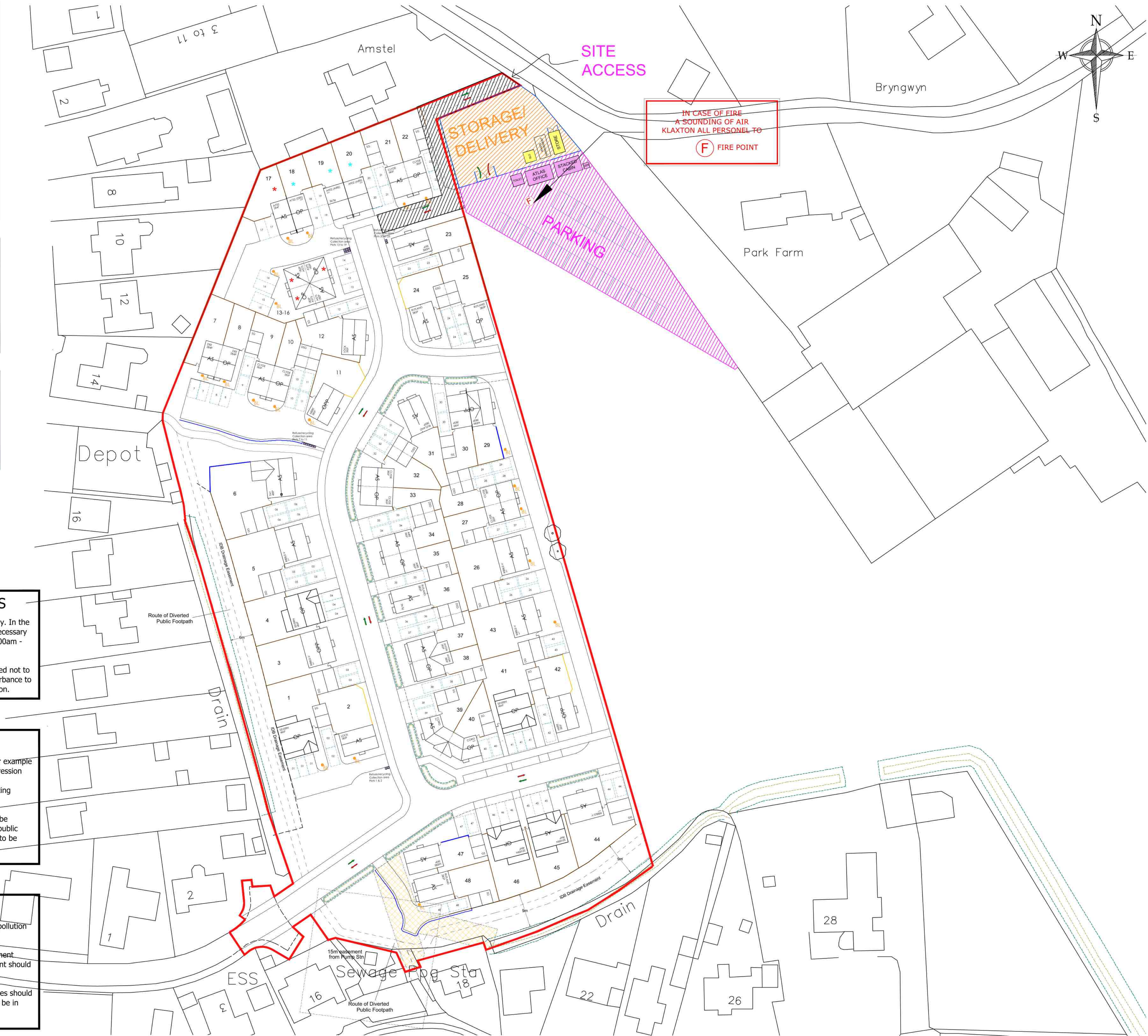
Control of dust
Where dust issues are likely to occur, for example when cutting and excavating, dust suppression and use of RPE (respiratory protection equipment), and where appropriate wetting practices should be implemented.

The condition of site haul routes should be monitored. Mud is not to be taken onto public roads. Road sweeping and road wetting to be implemented as required.

Noise Management
The site manager should monitor noise pollution across their site at all times.

Where practically possible, 'quite' equipment should be used. Machinery and equipment should only be used for the required time.

Vehicles should not be revved and engines should not be left running when not required to be in operation.



KEY

SITE WELFARE
SITE OFFICE & CANTEEN

SILOS
STORAGE CONTAINERS

COMPOUND STORAGE

SITE INGRESS & EGRESS
TO COMPOUND & SITE PARKING

TRAFFIC IN

TRAFFIC OUT

D	11.11.2021	UPDATED TO NEW LAYOUT
C	06.07.2021	ADDITIONAL PARKING TO SEVERN HOUSE TYPES
B	24.02.2021	UPDATED TO NEW LAYOUT
A	11.11.2020	SITE ACCESS AMENDED
REV	DATE	DESCRIPTION

ASHWOOD
HOMES

1 Goodison Road, Lincs Gateway Business Park,
Spalding, Lincs, PE12 6FY T: 01406 490590

PROJECT:
PROPOSED RESIDENTIAL DEVELOPMENT AT
SUNNYDALE CLOSE
SURFLEET

DRAWING TITLE:
CONSTRUCTION MANAGEMENT PLAN

SCALE: 1:500 @ A1 DATE: 08.11.2021

DRAWN: AR REV: D

DRAWING No:
118 - CMP - 01